

The *FastBand* SOLUTION

featuring
LaserBand2® Products



- **Vertical BarCode**
for trouble-free scanning.
- **Clear Plastic Fold-over with adhesive**
easy to read and scan.
- **Narrow Softer Band**
for greater comfort.
- **Matching Extender Band**
for larger wrists.
- **Optional Foam Cuff for Babies**
or patients with fragile skin.
- **Available in Colors**



FormFast Software and LaserBand

— *two of the most trusted names in healthcare information solutions* —

*The **FastBand** SOLUTION provides a complete and easy-to-use system of patient identification.*

Print Bands on LaserPrinter in
Admissions, Nursing Station, OBGYN
using proprietary interfaces for:

- McKesson, Siemens, Meditech, Keane, QuadraMed, Cerner, IDX Epic, Eclipsys... any HIS system
- Format one or more barcodes for point of care allowing patient ID verification for multiple systems... meds, phlebotomy, gluometers, transfusions
- It's a TOTAL system that works for you, with one source responsibility



TABLE OF CONTENTS

2006 PRODUCT GUIDE



ADULT PRODUCTS LB2-ADULT-L2, LB2-ADULT-S, LB2-ADULT-SC, LB2-ADULT-P	6-8
PEDIATRIC PRODUCT LB2-PED-L2	9
BABY PRODUCTS LB2-BABY-L, LB2-BABY-L2, LB2-BABY-S, LB2-MFB, LB2-BABY-P, LB2-BABY-SWB	10-15



The **FastBand**
SOLUTION

CASE STUDY



ST. JOHN'S MERCY MEDICAL CENTER

St. John's Mercy Medical Center, a leader in maternity services, uses a combination of infant identification products from the LaserBand2® line to form a specialized solution in the Neonatal ICU.

INTRODUCTION

Since opening its doors more than 125 years ago, St. John's Mercy Medical Center has been committed to compassionately caring for women and children using quality resources. From staffing top physicians and nurses, to using advanced equipment and materials, St. John's Mercy Medical Center has firmly established its reputation in the St. Louis area, welcoming more than 7,200 babies each year, 1,200 of whom are Neonatal ICU admissions.

CHALLENGE

Find an identification solution that:

- ▶ Supported an initiative in the NICU to improve care while facilitating medication administration and information management
- ▶ Addressed the special and often critical requirements of infant patients

SOLUTION

Selection of LaserBand2® Baby Products

▶ LB2-BABY-L2

Laser-printable form with two self-laminating baby wristbands, two self-laminating baby tags, and twenty labels

▶ LB2-BABY-P

Baby ComfyCuff™ used with the LB2-BABY-L2 self-laminating baby ID tags

▶ LB2-BABY-SWB

Swaddle strap used with the LB2-BABY-L2 self-laminating baby ID tags and the LB2-BABY-P baby ComfyCuff™

RESULTS

- ▶ Seamless integration between the LaserBand2® product and the Bridge Medication administration and the hospital's financial software
- ▶ Improved patient care and safety with measurable identification enhancements such as:
 - ▶ An increased number of patients actually wearing ID bands
 - ▶ A decreased number of ID bands being used during a hospital stay
 - ▶ Flexible and adaptable ID band features that corresponded with the demands of the infant environment

Advanced Patient Safety

LASERBAND²

Make No MistakeTM

LaserBand's advanced line of wristband and label products accommodate the special and often critical requirements that patients and the people that care for them demand.

LASERBAND2[®] INNOVATIVE FEATURES

Same great features as The Original LaserBand[®] product PLUS...

SUPERIOR LEGIBILITY

Crystal-clear laminate material, ultra-white print area and adhesive free zone in window creates superior legibility and error-free barcode scanning

STREAMLINED INFORMATION

Special all-in-one product features like security seal and wristband extender as well as accessories like the ComfyCuffTM streamline identification and product assembly

ASSEMBLY OPTIONS

Multiple configurations, including the new simple closure wristband, provide users options when banding patients while also helping to eliminate incorrect assembly

ADDED COMFORT

Flexible material of wristband provides a flat surface to increase scanning performance while also providing patient comfort

LOOK FOR THESE FEATURE ICONS ON EACH LASERBAND PRODUCT INFORMATION SHEET:



WRISTBAND



LABELS



EXTENDER



HOLE
PUNCHED



COLOR



ADULT



PEDIATRIC



BABY



SPECIAL
FEATURES

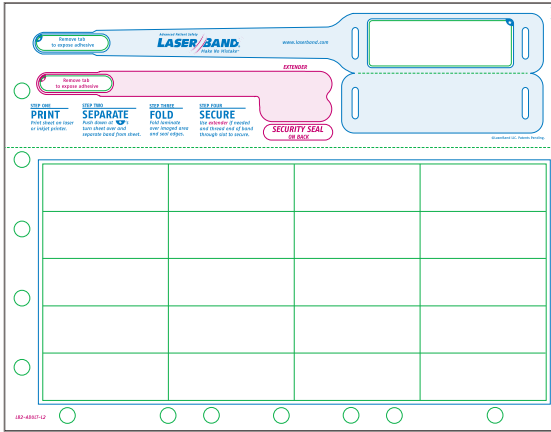


TAMPER
EVIDENT

▶ LaserBand2[®] products accurately *distinguish and carefully protect the unique needs of adult, pediatric and baby patients*. Rely on the LaserBand2[®] product line to address everything from the delicacy of neonatal babies to the special precautions and allergies of an adult...all with the thoughtful design elements and material durability you have come to expect from LaserBand[®].

LB2-ADULT-L2

SIMPLE CLOSURE ADULT WRISTBAND WITH 20 LABELS



Offering the most streamlined wristband assembly and attachment option to date, this form features a simple closure adult wristband with labels and an optional wristband extender and security seal.



FEATURES

- ▶ One wristband designed specifically for adults with additional labels
- ▶ Patented all-in-one, self-laminating wristband design to protect information and provide simple assembly
- ▶ Crystal-clear laminate and ultra-white image area for superior legibility
- ▶ Wristband extender included for comfort of larger patients
- ▶ Conveniently hole-punched to fit in healthcare charts
- ▶ Integrated security seal indicates wristband tampering and ensures a more permanent fit
- ▶ Color and ComfyCuff™ options for addressing special patient needs

SPECIFICATIONS

- ▶ 1: 8 1/4" easy-to-assemble-and-attach self-laminating adult wristband with 2 3/4" x 7/8" image area
- ▶ 1: 4" wristband extender per sheet
- ▶ 20: 2 1/2" x 1" printable labels per sheet
- ▶ 8 1/2" x 11" carrier sheet for use on all standard laser or ink jet printers
- ▶ Standard healthcare hole-punched
- ▶ Integrated security seal - included on back side of form
- ▶ Optional - color versions and recommended ComfyCuff™

ORDERING OPTIONS

- ▶ 1,000 per case (4 packs of 250)

Adult, w/Labels, Simple Closure

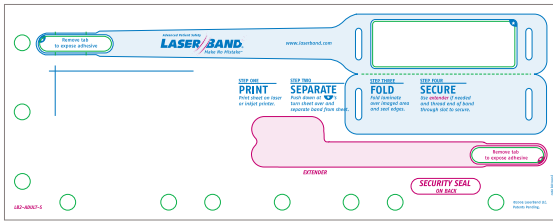
- ▶ 100 per case (1 pack of 100)

Adult, ComfyCuff™



LB2-ADULT-S, LB2-ADULT-SC

ADULT WRISTBAND SHEETLET



Print a single self-laminating adult wristband then extend the band for the comfort of larger patients, secure the band with the integrated security seal, and add a durable card.



FEATURES

- ▶ One patented all-in-one, self-laminating wristband designed for adult patients
- ▶ Crystal-clear laminate and ultra-white image area for superior legibility
- ▶ Wristband extender included for comfort of larger patients
- ▶ Optional card with choice to pre-print or print-on-demand any information
- ▶ Conveniently hole-punched to fit in healthcare charts
- ▶ Integrated security seal indicates wristband tampering and ensures a more permanent fit
- ▶ Color and ComfyCuff™ options for addressing special patient needs

SPECIFICATIONS

- ▶ 1: 8 1/4" easy-to-assemble-and-attach self-laminating adult wristband with 2 3/4" x 7/8" image area
- ▶ 1: 4" wristband extender per sheet
- ▶ 1: optional 3 3/8" x 2 1/8" durable card per sheet
- ▶ 4 1/4" x 11" carrier sheet for use on all standard laser or ink jet printers
- ▶ Standard healthcare hole-punched
- ▶ Integrated security seal - included on back side of form
- ▶ Optional - color versions and recommended ComfyCuff™

ORDERING OPTIONS

- ▶ 1,000 per case (4 packs of 250)



Adult, Wristband Only, Simple Closure



Adult, Wristband Only, Simple Closure, w/Card

- ▶ 100 per case (1 pack of 100)



LB2-ADULT-P

ADULT COMFYCUFF™



This ComfyCuff™ provides extra comfort for adult patients when used in conjunction with any LB2-ADULT wristband.



FEATURES

- ▶ Easy-to-use, velcro-attaching foam cuff

SPECIFICATIONS

- ▶ 12' x 1½" ready-to-use foam cuff with velcro strap for adjustability

ORDERING OPTIONS

- ▶ 100 per case

LB2-ADULT-P

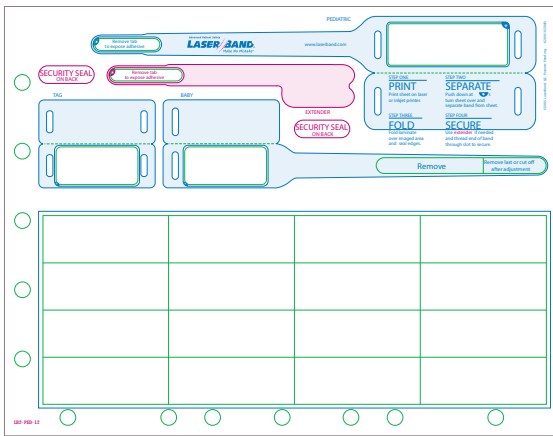
WHITE

Adult, ComfyCuff™



LB2-PED-L2

SIMPLE CLOSURE PEDIATRIC WRISTBAND / ID TAG WITH 16 LABELS



By combining two different-sized self-laminating wristbands, a self-laminating ID tag for use with our LB2-BABY-P ComfyCuff™, a wristband extender, a security seal, and labels, this form offers all-in-one pediatric identification.

FEATURES

- ▶ Two patented all-in-one self-laminating wristbands specifically intended for pediatric patients
- ▶ One patented all-in-one self-laminating tag to be used with our ComfyCuff™
- ▶ Additional labels for duplicating patient information
- ▶ Crystal-clear laminate and ultra-white image area for superior legibility of patient information
- ▶ Length extender included for comfort of larger pediatric patients
- ▶ Conveniently hole-punched to fit in healthcare charts
- ▶ Integrated security seal indicates wristband tampering and ensures a more permanent fit
- ▶ Color and ComfyCuff™ options for addressing special patient needs

SPECIFICATIONS

- ▶ 1: 5³/₄" adjustable self-laminating wristband with 1⁵/₈" x 3³/₄" image area
- ▶ 1: 7¹/₈" adjustable self-laminating wristband with 2³/₈" x 3³/₄" image area
- ▶ 1: 1⁵/₈" x 3³/₄" self-laminating ID tag per sheet
- ▶ 1: 3¹/₂" wristband extender per sheet
- ▶ 16: 2¹/₂" x 1" printable labels per sheet
- ▶ 8 1/2" x 11" carrier sheet for use on all standard laser or ink jet printers
- ▶ Standard healthcare hole-punched
- ▶ Integrated security seal - included on back side of form
- ▶ Optional - color versions and recommended ComfyCuff™

ORDERING OPTIONS

- ▶ 1,000 per case (4 packs of 250)

LB2-PED-L

WHITE

BLUE

RED

Pediatric, w/Labels, Simple Closure

- ▶ 100 per case (1 pack of 100)

LB2-BABY-P

WHITE

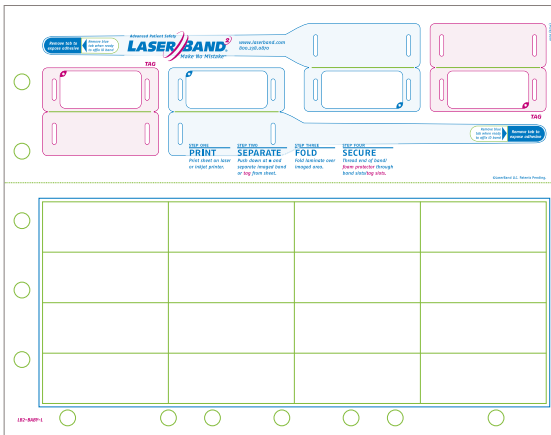
Baby, ComfyCuff™

LB2-PED-L2 SIMPLE CLOSURE PEDIATRIC WRISTBAND / ID TAG WITH 16 LABELS



LB2-BABY-L

BABY WRISTBANDS (HANG TAG OPTION) / ID TAGS WITH 16 LABELS



Specially designed for the unique demands of babies, this form includes labels, two self-laminating wristbands/ID tags that can be used with our LB2-BABY-P ComfyCuff™ to provide maximum patient comfort.



FEATURES

- ▶ Two patented all-in-one self-laminating wristbands/ID tags designed to protect infant identification information
- ▶ Wristbands used in either hang-tag or flat wrist/ankle wrap configuration
- ▶ Tags to be used with our ComfyCuff™
- ▶ Additional labels for duplicating patient information
- ▶ Crystal-clear laminate and ultra-white image area for superior legibility of patient information
- ▶ Conveniently hole-punched to fit in healthcare charts
- ▶ ComfyCuff™ option for addressing special patient needs

SPECIFICATIONS

- ▶ 2: 4 1/2" adjustable self-laminating baby wristbands with 1 5/8" x 3/4" image area
- ▶ 2: 1 5/8" x 3/4" self-laminating baby ID tags per sheet
- ▶ 16: 2 1/2" x 1" printable labels per sheet
- ▶ 8 1/2" x 11" carrier sheet for use on all standard laser or ink jet printers
- ▶ Standard healthcare hole-punched
- ▶ Optional - recommended ComfyCuff™

ORDERING OPTIONS

- ▶ 1,000 per case (4 packs of 250)

LB2-BABY-L

WHITE

Baby, w/Labels

- ▶ 100 per case (1 pack of 100)

LB2-BABY-P

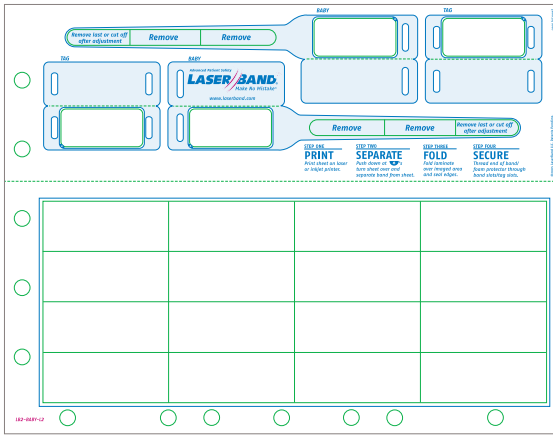
WHITE

Baby, ComfyCuff™



LB2-BABY-L2

SIMPLE CLOSURE BABY WRISTBANDS / ID TAGS WITH 16 LABELS



With two adaptable self-laminating wristbands, two self-laminating ID tags for use with our LB2-BABY-P ComfyCuff™, and additional labels, the LB2-BABY-L2 offers the most flexible baby identification to date.



FEATURES

- ▶ Two patented all-in-one self-laminating wristbands/ID tags designed to protect infant identification information
- ▶ Wristbands can be adjusted to fit various patient sizes
- ▶ Tags to be used with our ComfyCuff™
- ▶ Additional labels for duplicating patient information
- ▶ Crystal-clear laminate and ultra-white image area for superior legibility of patient information
- ▶ Conveniently hole-punched to fit in healthcare charts
- ▶ ComfyCuff™ option for addressing special patient needs

SPECIFICATIONS

- ▶ 2: 4 1/2" adjustable self-laminating baby wristbands with 1 5/8" x 3/4" image area
- ▶ 2: 1 5/8" x 3/4" self-laminating baby ID tags per sheet
- ▶ 16: 2 1/2" x 1" printable labels per sheet
- ▶ 8 1/2" x 11" carrier sheet for use on all standard laser or ink jet printers
- ▶ Standard healthcare hole-punched
- ▶ Optional - recommended ComfyCuff™

ORDERING OPTIONS

- ▶ 1,000 per case (4 packs of 250)

LB2-BABY-L2

WHITE

Baby, w/Labels, Simple Closure

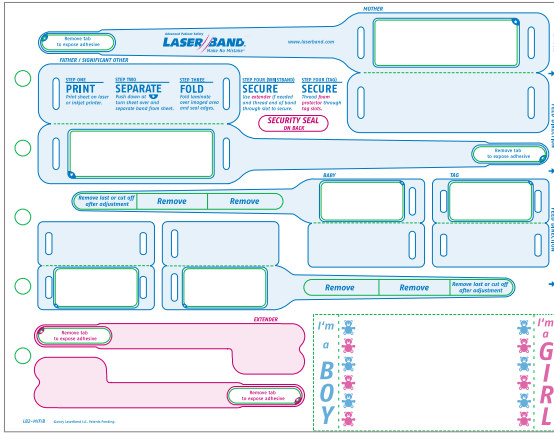
- ▶ 100 per case (1 pack of 100)

LB2-BABY-P

WHITE

Baby, ComfyCuff™





By coordinating adult and child identification all on one form, the LB2-MFB was designed to streamline the identification process in pediatric units and birthing centers.



FEATURES

- ▶ Four patented all-in-one self-laminating wristbands designed for various identification applications
- ▶ Two patented all-in-one self-laminating tags to be used with our ComfyCuff™
- ▶ One tear off ID/crib card with "I'm a BOY" or "I'm a GIRL" indicator tabs
- ▶ Crystal-clear laminate and ultra-white image area for superior legibility
- ▶ Two wristband extenders included for comfort of larger patients
- ▶ Conveniently hole-punched to fit in healthcare charts
- ▶ Integrated security seal indicates wristband tampering and ensures a more permanent fit
- ▶ ComfyCuff™ options for addressing special patient needs

SPECIFICATIONS

- ▶ 2: 8 1/4" x 7/8" self-laminating adult wristbands with 2 3/4" x 7/8" image area
- ▶ 2: 4 1/2" self-laminating baby wristbands with 1 5/8" x 3/4" image area
- ▶ 2: 1 5/8" x 3/4" self-laminating baby ID tags per sheet
- ▶ 1: 2 1/2" x 4 1/8" ID/crib card per sheet
- ▶ 2: 4" wristband extenders per sheet
- ▶ 8 1/2" x 11" carrier sheet for use on all standard laser or ink jet printers
- ▶ Standard healthcare hole-punched
- ▶ Integrated security seal - included on back side of form
- ▶ Optional - recommended ComfyCuff™

ORDERING OPTIONS

- ▶ 1,000 per case (4 packs of 250)

LB2-MFB

WHITE

Adult/Baby, Wristbands/ID Tags Only, Simple Closure

- ▶ 100 per case (1 pack of 100)

LB2-ADULT-P

WHITE

Adult, ComfyCuff™

LB2-BABY-P

WHITE

Baby, ComfyCuff™



LB2-BABY-P

BABY COMFYCUFF™



This ComfyCuff™ provides extra comfort for baby patients when used in conjunction with any LB2-BABY ID tag.



FEATURES

- ▶ Easy-to-use, velcro-attaching foam cuff
- ▶ Recommended to provide maximum comfort on a patient's ankle or wrist

SPECIFICATIONS

- ▶ 5" x 1 1/4" ready-to-use, foam cuff with velcro strap for adjustability

ORDERING OPTIONS

- ▶ 100 per case

LB2-BABY-P

WHITE

Baby, ComfyCuff™



LB2-BABY-SWB

BABY SWADDLE BAND



When used with a printed baby ID tag and our LB2-BABY-P ComfyCuff™ wrapped around a baby's ankle, the LB2-BABY-SWB enable users to access identification without having to wake-up or manipulate a swaddled infant patient.



FEATURES

- ▶ Easy-to-use band creates an identification extension between the LB2-BABY-P and LB2-BABY ID tags

SPECIFICATIONS

- ▶ Ready-to-use swaddle band

ORDERING OPTIONS

- ▶ 250 per case

LB2-BABY-SWB | Baby, Swaddle Band

- ▶ 100 per case

LB2-BABY-P | WHITE | Baby, ComfyCuff™

